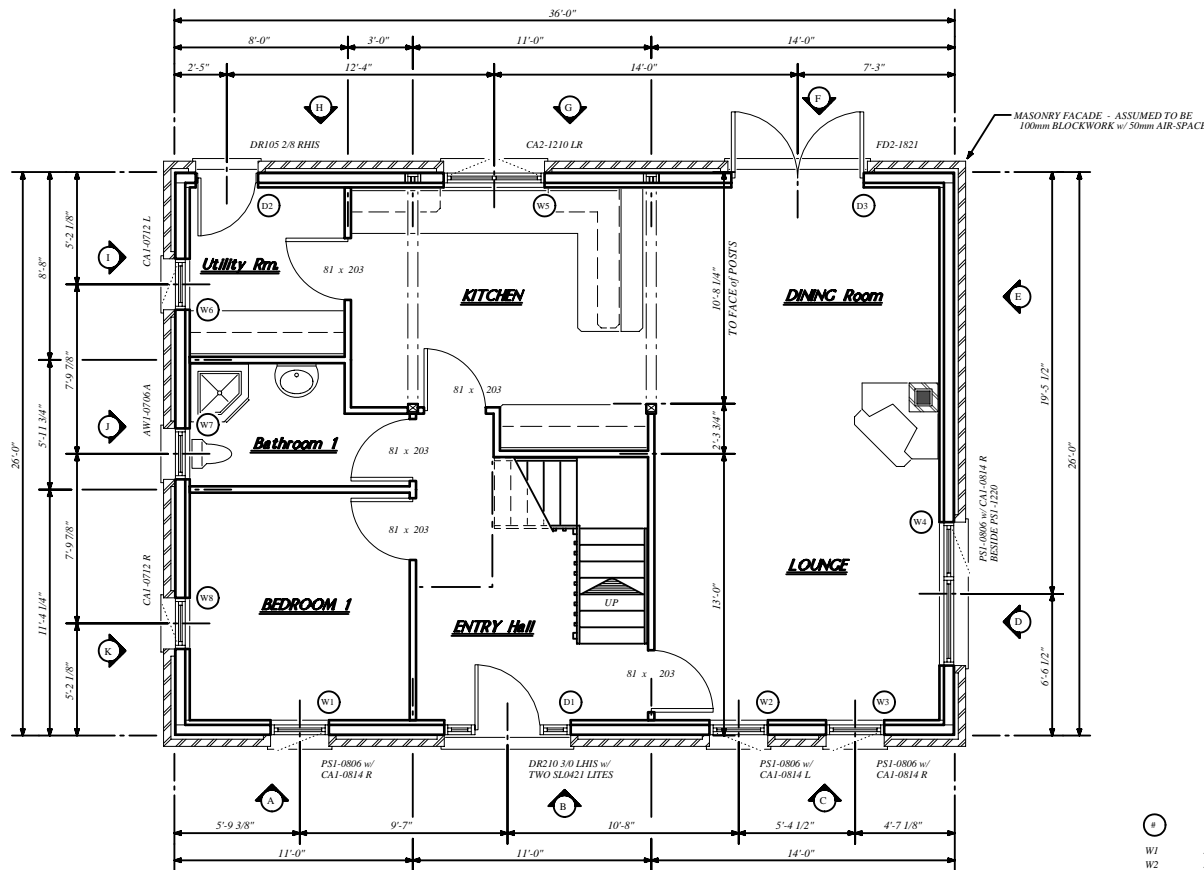


NOTES & REVISIONS

* ALL MEASUREMENTS ARE TO BE CHECKED BY OWNER and/or CONTRACTOR BEFORE COMMENCING CONSTRUCTION. ANY ERRORS and/or OMISSIONS ARE TO BE REPORTED DIRECTLY TO INTERHABS Ltd.

* ALL MEASUREMENTS SHOWN TO AN EXTERIOR WALL ARE REFERENCED TO THE OUTSIDE FACE OF THE EXTERIOR SHEATHING - 12.3mm EAST THE OUTER FACE OF THE STUD.



MAIN FLOOR PLAN
SCALE - 1/50

* ALL DIMENSIONS SHOWN ARE TAKEN TO THE OUTSIDE FACE OF THE EXTERIOR WALL SHEATHING.

WINDOW / EXTERIOR DOOR SCHEDULE

REF.	"LOEWEN" REF.	TYPE	ROUGH OPENING
W1	PSI-0806 w/ CAI-0814	FIXT w/ CASEMENT OVER	769mm wide x 2019mm high
W2	PSI-0806 w/ CAI-0814	FIXT w/ CASEMENT OVER	769mm wide x 2019mm high
W3	PSI-0806 w/ CAI-0814	FIXT w/ CASEMENT OVER	769mm wide x 2019mm high
W4	PSI-0806 w/ CAI-0814 RESIDE PSI-1220	FIXT w/ CASEMENT OVER and FIXT BESIDE	2019mm wide x 2019mm high
W5	CA2-1210	DOUBLE CASEMENT	1219mm wide x 1019mm high
W6	CAI-0712	CASEMENT	719mm wide x 1219mm high
W7	AW1-0706 A	AWNING	719mm wide x 619mm high
W8	CAI-0712	CASEMENT	719mm wide x 1219mm high
W9	CA2-1412	DOUBLE CASEMENT	1419mm wide x 1219mm high
W10	CA2-1412	DOUBLE CASEMENT	1419mm wide x 1219mm high
D1	DR105	815mm wide STEEL DOOR w/ FIXT LITE	877mm wide x 2115mm high
D2	DR210 w/ TWO SL0421	915mm wide STEEL DOOR w/ TWO SIDELITES	1778mm wide x 2115mm high
D3	FD2-1821	92mm wide STEEL TERRACE DOORS	1064mm wide x 2087mm high

* ALL STATED ROUGH OPENING SIZES ARE TO BE CHECKED AGAINST THE MANUFACTURER'S SPECIFICATIONS BEFORE COMMENCING CONSTRUCTION.

	habitations international (interhabs ltd., (902) 422-2121	JOB NO. EI05/...	~ CUSTOM CAPE COID ~ Mr. R. LONG - BELMULLET		
		DWN. RNB			
		APP.	SCALE AS NOTED	TITLE MAIN FLOOR PLAN	DWG. NO. 03
	collins' court, historic properties 1869 upper water street halifax, nova scotia, canada B3J 1S9 manufacturing plant hubbards (902) 857-9160	DATE NOV. 2, 2015	REVISED		